

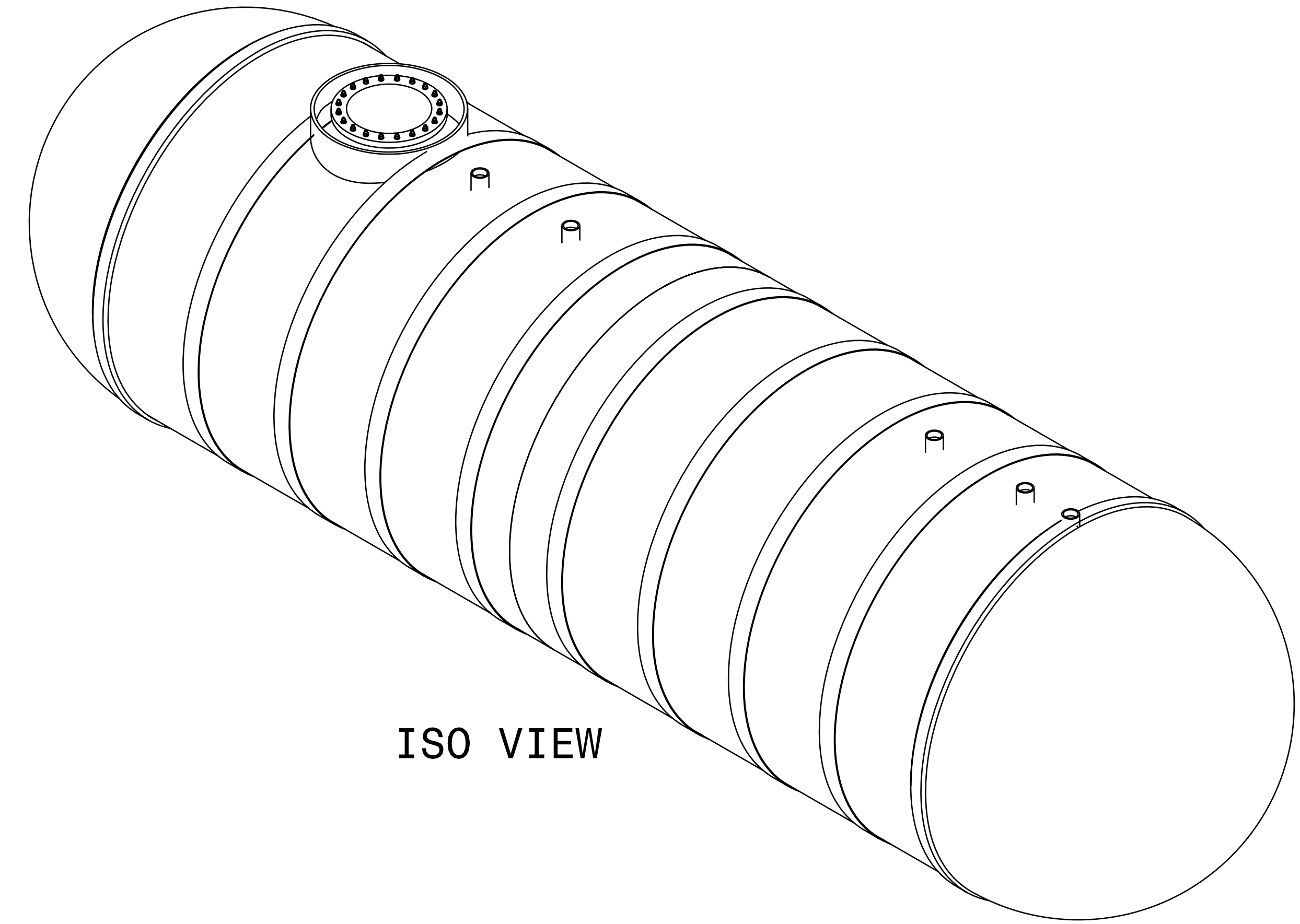
NOTES: UNLESS OTHERWISE SPECIFIED

- ALL BOLT HOLES TO STRADDLE NORMAL TANK CENTERLINES UNLESS OTHERWISE SHOWN
- NOZZLE PROJECTIONS ARE 6" FROM OUTSIDE OF TANK TO FACE OF FLANGE UNLESS OTHERWISE SHOWN
- COUPLING TO BE 2" PROJECTION ON SIDE WALL OF TANK
- STRIKER PLATE (12" X 12") MUST BE INSTALLED AT BOTTOM OF TANK WALL UNDER EACH COUPLING (WITH THE EXCEPTION OF VENT ONLY COUPLINGS).
- STRIKER PLATE (24" X 24") MUST BE INSTALLED AT BOTTOM OF TANK WALL UNDER MANWAY ACCESS OPENING.
- TANK DESIGNED, FABRICATED, INSPECTED/TESTED IN ACCORDANCE WITH UL/ULC -1316 SPEC'S CURRENT EDITION.
- TRAFFIC RATE TANK - LID MUST BE RECESSED IN CONCRETE SLAB
- DEADMEN, STRAPS, TURNBUCKLES, AND INSTALLATION SHACKLES ARE NOT INCLUDED

SON # 255

20K CAPACITY

REVISIONS			
REV	DESCRIPTION	DATE	APPVD
02	Convert to Stock Tank	06/21/23	
01	Update with Donna's Comments	05/23/23	
IR	INITIAL RELEASE	05/15/23	



ISO VIEW

LABEL	SIZE	MATL.	DESCRIPTION	ADDITIONAL ACCESSORIES - NOTES	QTY
A1	4"	FRP	HALF COUPLING	PROBE RIB	1
B1	4"	FRP	HALF COUPLING	W/ 12" X 12" STRIKER PLATE	1
B2	4"	FRP	HALF COUPLING	W/ 12" X 12" STRIKER PLATE	1
B3	4"	FRP	HALF COUPLING	W/ 12" X 12" STRIKER PLATE	1
M1	24"	FRP	MANWAY	W/ 24" X 24" STRIKER PLATE	1
M2	-	C.S.	MANWAY COVER	SEE MANWAY COVER DWG	1
M3	42"	FRP	COLLAR	REFER TO BRAVO PRODUCTLINE	1
LL	-	GALV.	LIFTING LUGS	NOT SHOWN IN DRAWING	4
PL	-	GALV.	POSITION LUGS		2
DM	-	-	ANCHOR SYSTEM	NO DEADMEN PROVIDED	0
TDS	-	-	STRAP ASSEMBLY	D-RINGS GLASSSED TO FRP STRAP; 1/2" THK TO BE USED IN ANCHORING TANK TO DEADMAN, USING SHACKLES, & TURN- BUCKLE PER STRAP	4
TB	-	-	TURNBUCKLES		0

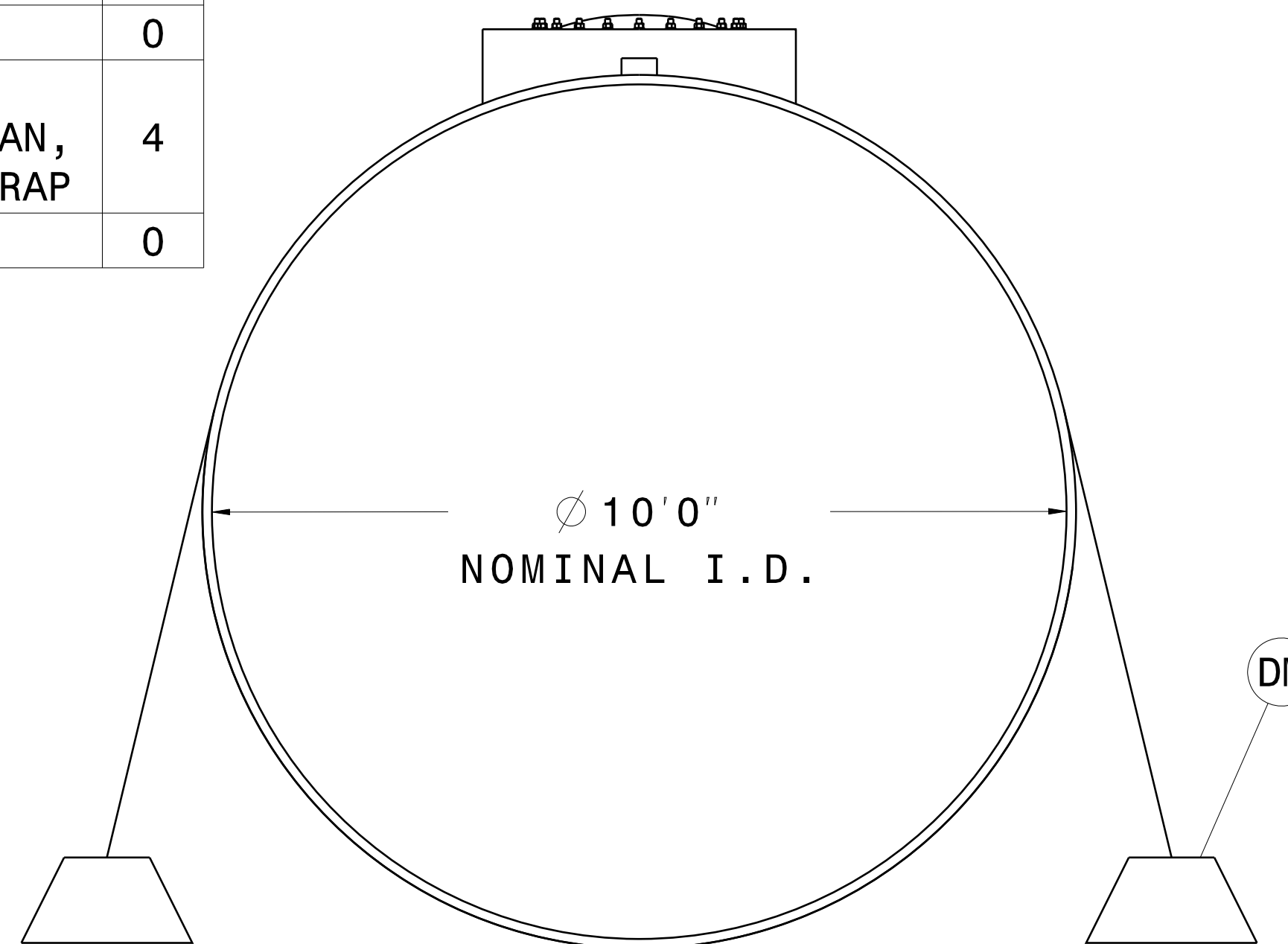
COMPANY: _____

DATE: _____

NAME (PRINTED): _____

[] APPROVED: _____

[] REDRAW AND RESUBMIT: _____



END VIEW

SHIPPING INFO:

MAX LENGTH = 37' - 7"

MAX HEIGHT = 11' - 6" (W/O SUMP RISER)

MAX WIDTH = 10' - 8"

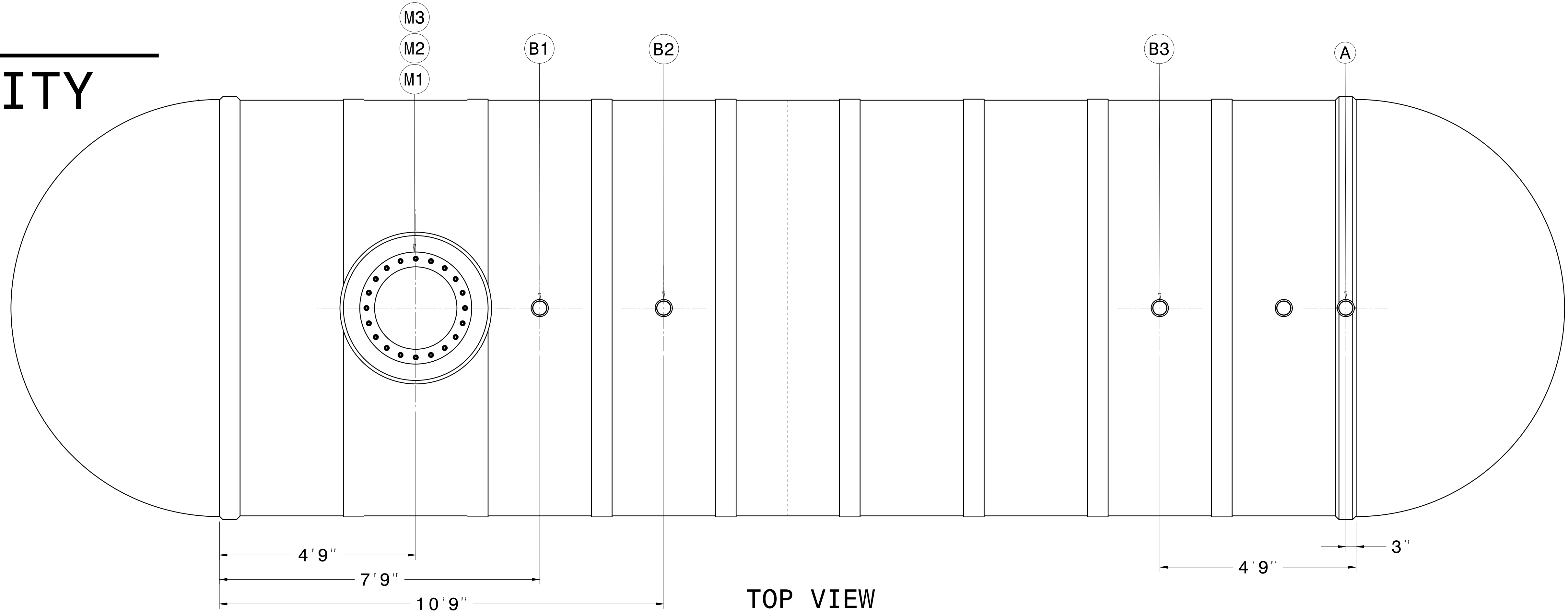
TANK WEIGHT = 10,700 LBS

CONTROLLED COPY

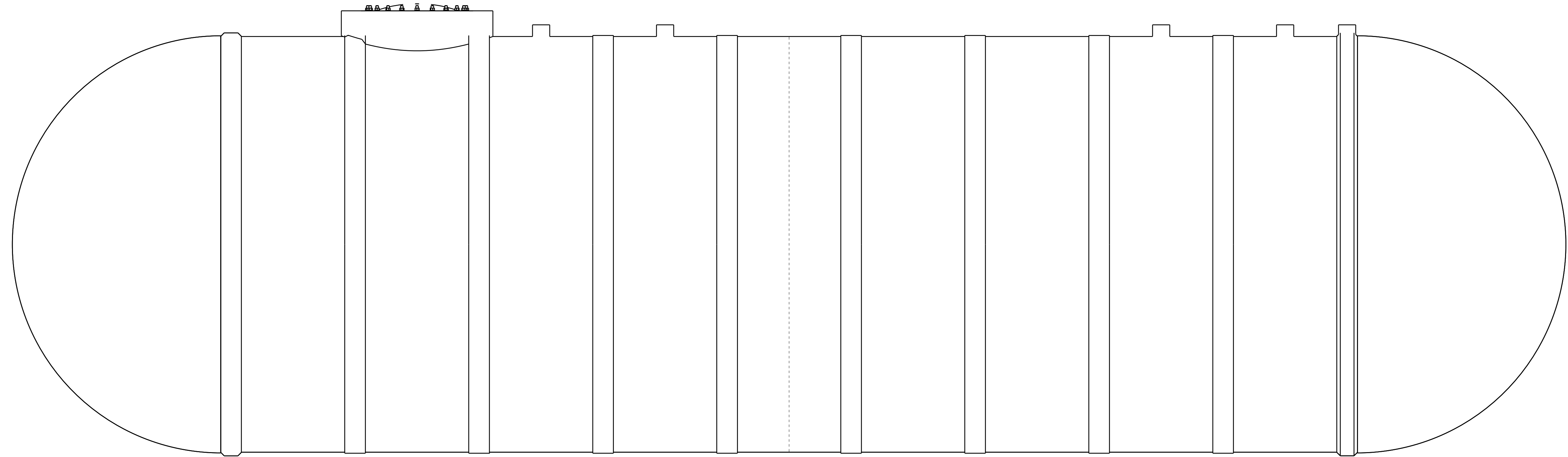
ALL INFORMATION WITHIN THIS DRAWING IS CONSIDERED CONFIDENTIAL, PROPRIETARY INFORMATION

DIMENSIONS ARE IN INCHES UNLESS OTHERWISE SPECIFIED. BREAK EDGES/REMOVE BURRS.		DRAWING NAME: 10' FRP FUEL TANK 20K GAL		NATIONWIDE TANKS	
ANGLE - 1:2:0	SCALE: NONE	SHEET: D	SON #: 255	REV: 02	1 OF 2
NEXT ASSY	USED ON	DO NOT SCALE DRAWING	CAGE CODE:		
APPLICATION					

SON # 255
20K CAPACITY



TOP VIEW



SIDE VIEW

RECIPE LENGTH = 201"
 Shell 1 & 2 = 13'9"
 Cut-Line = 147"