

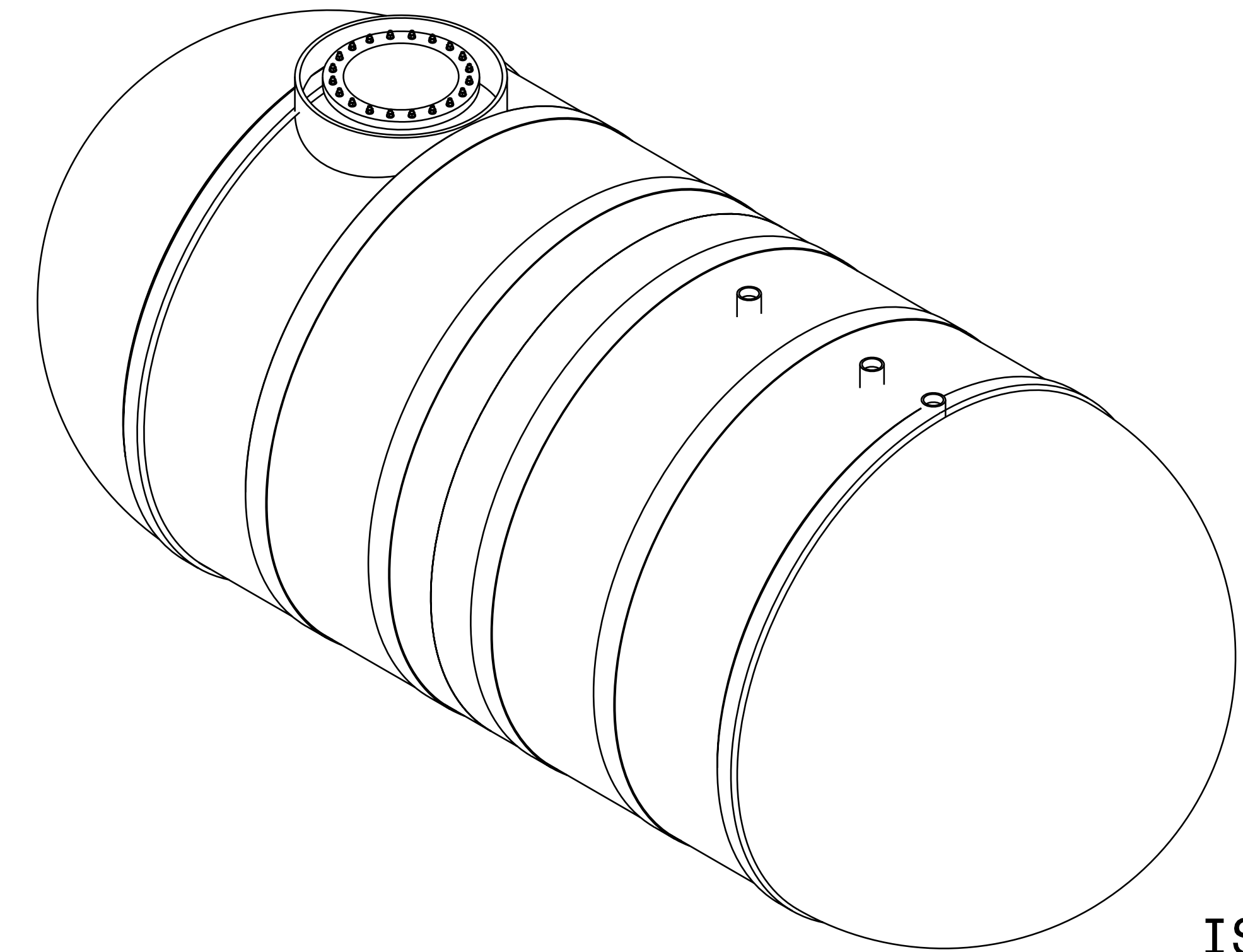
NOTES: UNLESS OTHERWISE SPECIFIED

1. ALL BOLT HOLES TO STRADDLE NORMAL TANK CENTERLINES UNLESS OTHERWISE SHOWN
2. NOZZLE PROJECTIONS ARE 6" FROM OUTSIDE OF TANK TO FACE OF FLANGE UNLESS OTHERWISE SHOWN
3. COUPLING TO BE 2" PROJECTION ON SIDE WALL OF TANK
4. STRIKER PLATE (12" X 12") MUST BE INSTALLED AT BOTTOM OF TANK WALL UNDER EACH COUPLING (WITH THE EXCEPTION OF VENT ONLY COUPLINGS).
5. STRIKER PLATE (24" X 24") MUST BE INSTALLED AT BOTTOM OF TANK WALL UNDER MANWAY ACCESS OPENING.
6. TANK DESIGNED, FABRICATED, INSPECTED/TESTED IN ACCORDANCE WITH UL/ULC -1316 SPEC'S CURRENT EDITION.
7. TRAFFIC RATE TANK - LID MUST BE RECESSED IN CONCRETE SLAB
8. DEADMEN, STRAPS, TURNBUCKLES, AND INSTALLATION SHACKLES ARE NOT INCLUDED

# SON 297

## 13K CAPACITY

| REVISIONS |                        |            |       |
|-----------|------------------------|------------|-------|
| REV       | DESCRIPTION            | DATE       | APPVD |
| 02        | Stock Tank             | 06/21/2023 |       |
| 01        | Updated with 3" offset | 05/16/23   |       |
| IR        | INITIAL RELEASE        | 05/15/23   |       |

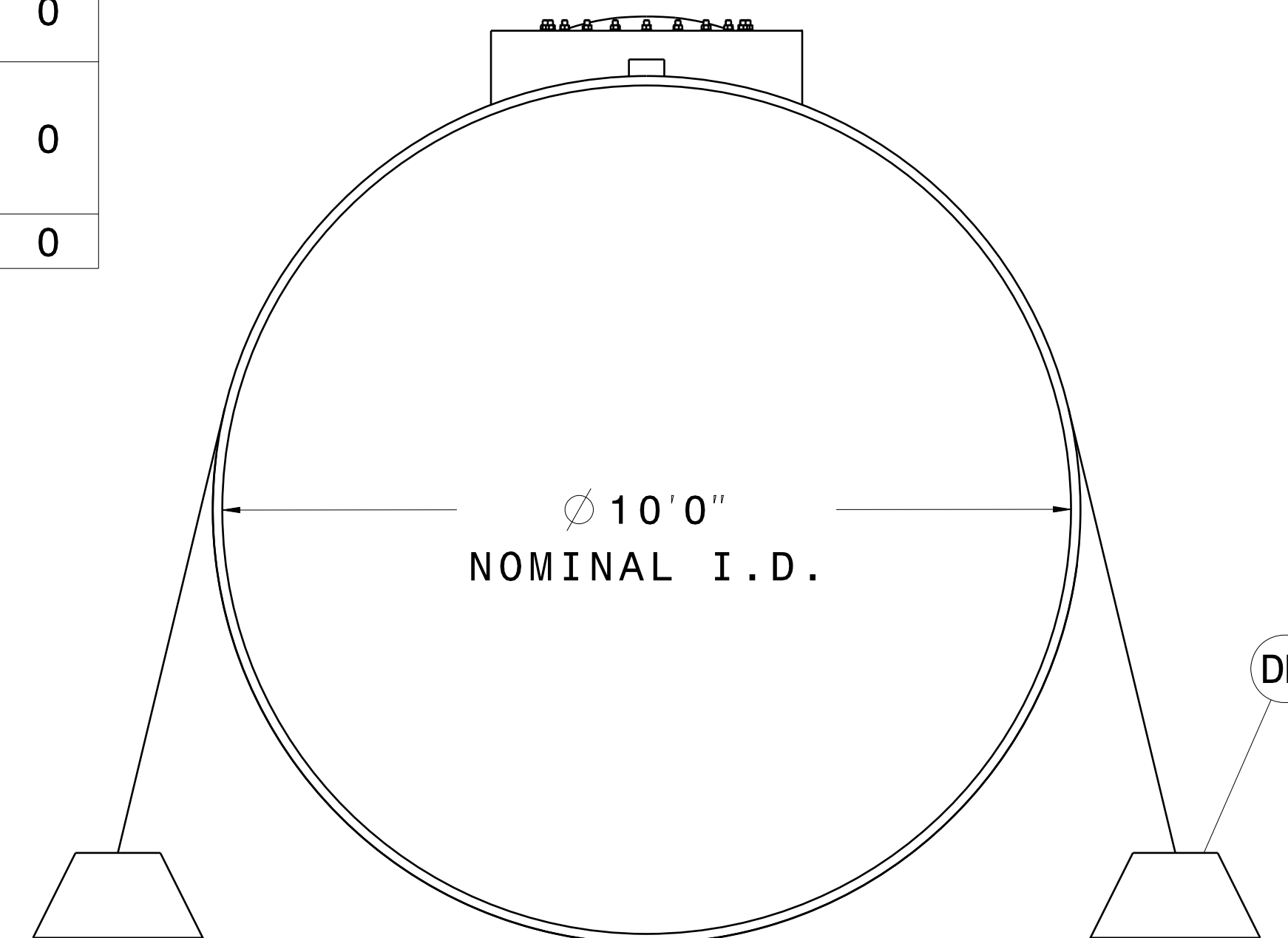


ISO VIEW

| LABEL | SIZE | MATL. | DESCRIPTION    | ADDITIONAL ACCESSORIES - NOTES   | QTY |
|-------|------|-------|----------------|--|-----|
| A1    | 4"   | FRP   | HALF COUPLING  | PROBE RIB  | 3   |
| B1    | 4"   | FRP   | HALF COUPLING  | W/ 12" X 12" STRIKER PLATE   | 1   |
| B2    | 4"   | FRP   | HALF COUPLING  | W/ 12" X 12" STRIKER PLATE   | 1   |
| M1    | 24"  | FRP   | MANWAY         | W/ 24" X 24" STRIKER PLATE   | 1   |
| M2    | -    | C.S.  | MANWAY COVER   | SEE MANWAY COVER DWG   | 0   |
| M3    | 42"  | FRP   | COLLAR         | REFER TO BRAVO PRODUCTLINE   | 1   |
| LL    | -    | GALV. | LIFTING LUGS   |  | 4   |
| PL    | -    | GALV. | POSITION LUGS  |  | 2   |
| DM    | -    | -     | ANCHOR SYSTEM  | 22' LONG SLOTTED CONCRETE ANCHOR W/GALV. ANCHOR POINTS   | 0   |
| TDS   | -    | -     | STRAP ASSEMBLY | D-RINGS GLASSED TO FRP STRAP; 1/2" THK TO BE USED IN ANCHORING TANK TO DEADMAN, USING SHACKLES, & TURN- BUCKLE PER STRAP | 0   |
| TB    | -    | -     | TURNBUCKLES    |  | 0   |

### SHIPPING INFO:

MAX LENGTH = 25' - 1"  
 MAX HEIGHT = 12' - 6" (W/O SUMP RISER)  
 MAX WIDTH = 11' - 0"  
 TANK WEIGHT = 6,000 LBS



END VIEW

COMPANY: \_\_\_\_\_

DATE: \_\_\_\_\_

NAME (PRINTED): \_\_\_\_\_

[ ] APPROVED: \_\_\_\_\_

[ ] REDRAW AND RESUBMIT: \_\_\_\_\_

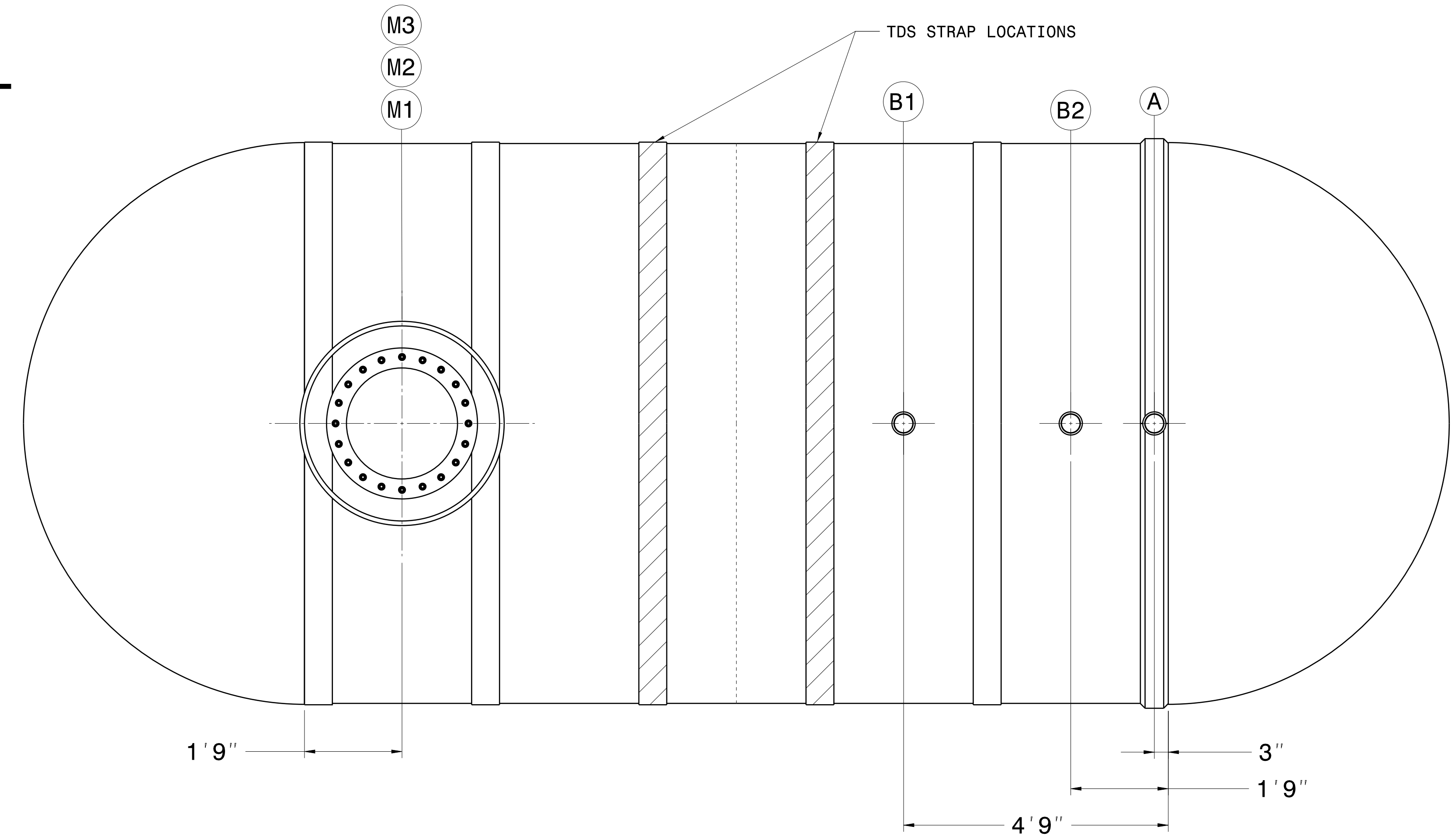
CONTROLLED COPY

ALL INFORMATION WITHIN THIS DRAWING IS CONSIDERED CONFIDENTIAL, PROPRIETARY INFORMATION

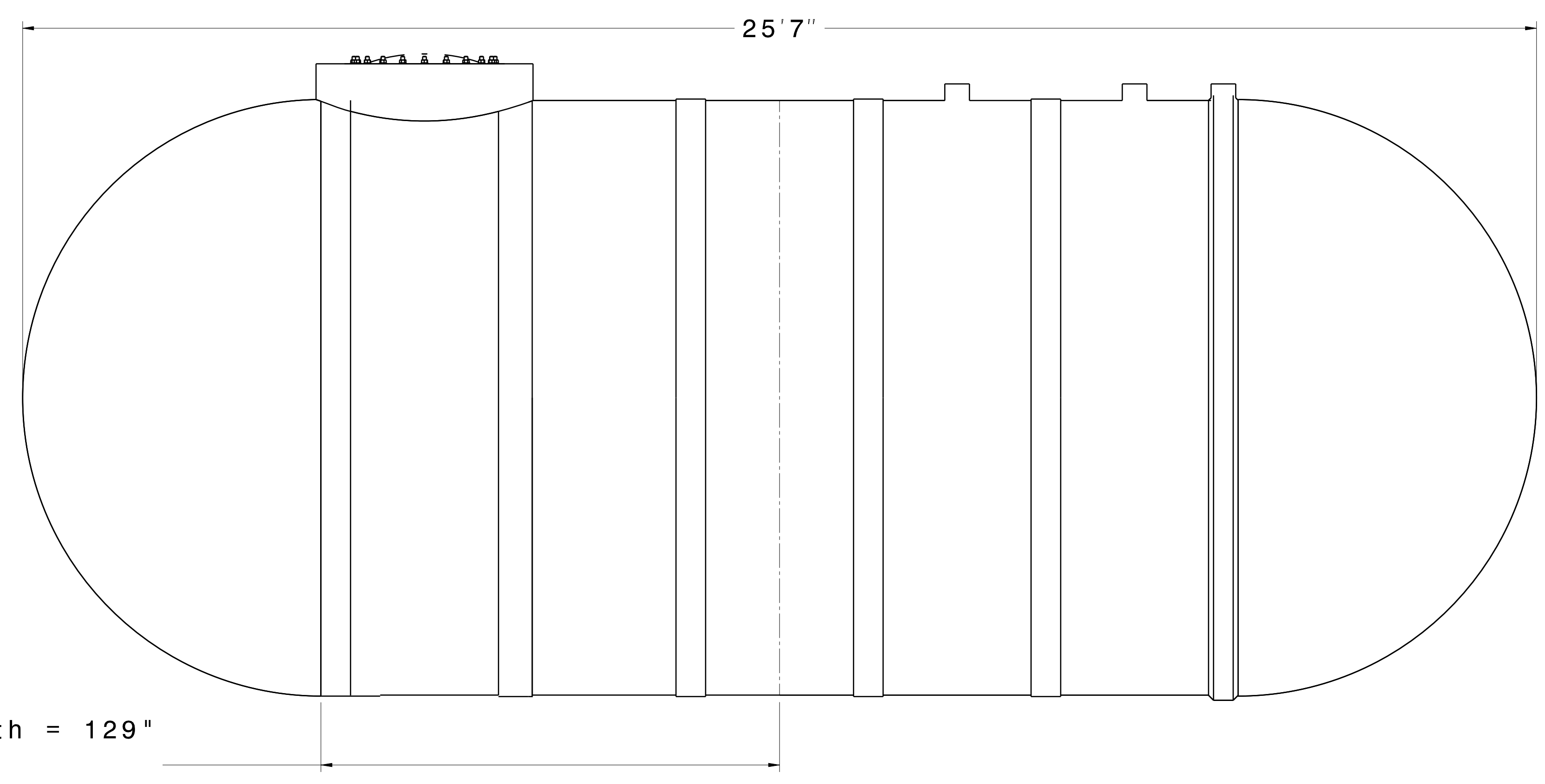
|  |   |  |                         |
|--|---|--|-------------------------|
| DIMENSIONS ARE IN INCHES UNLESS OTHERWISE SPECIFIED. BREAK EDGES/REMOVE BURRS. |   |  |                         |
| ANGLES - 1:2-Ø<br>X.XX = 0.01"<br>X.XXX = 0.001"<br>X.XXXX = 0.0001"           | MATERIAL:<br>FINISH:<br>SCALE: NONE<br>SHEET: D | DWG NAME:<br><b>10' x 12K GENERAL STOCK TANK</b> | SHEET: SON #:<br>1 OF 2 |
| NEXT ASSY  | USED ON   | APPLICATION                                      | REV: 02                 |

# SON 297

## 13K CAPACITY



TOP VIEW



SIDE VIEW

Recipe Length = 129"  
Shell 1 & 2 = 7'9"  
Cut-Line = 219"