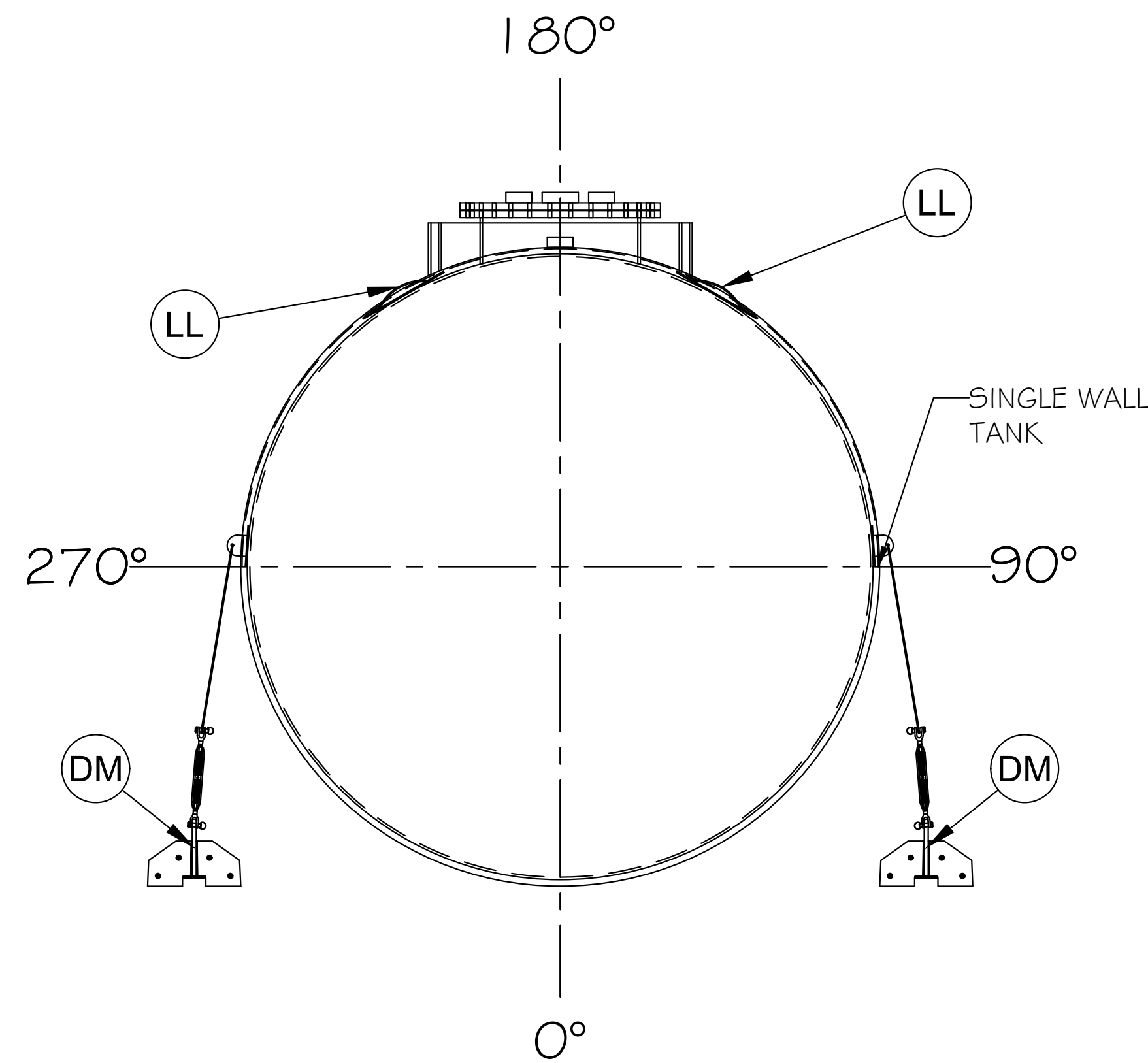
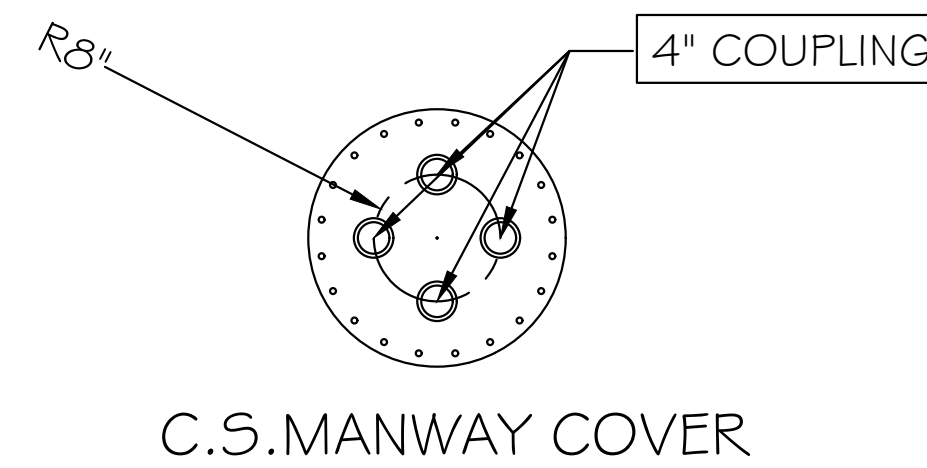


TRAFFIC RATED TANK
TRAFFIC RATED LID MUST BE RECESSED IN
CONCRETE SLAB



RIGHT SIDE VIEW



NOZZLE SCHEDULE						
LABEL	SIZE	MATL.	DESCRIPTION	ADDITIONAL ACCESSORIES - NOTES	SERVICE	QTY
A1	4"	FRP	HALF COUPLING	INTERSTITIAL FITTING; ONLY ON OUTER WALL	LEAK DETECTION	1
A2	4"	FRP	HALF COUPLING	INTERSTITIAL FITTING; ONLY ON OUTER WALL	LEAK DETECTION	1
B1	4"	FRP	FULL COUPLING	W/12" X 12" STRIKER PLATE	SERVICE	1
B2	4"	FRP	FULL COUPLING	W/12" X 12" STRIKER PLATE	SERVICE	1
B3	4"	FRP	FULL COUPLING	W/12" X 12" STRIKER PLATE	SERVICE	1
M1	24"	FRP	MANWAY	ACCESS OPENING; W/24" STRIKER PLATE	ENTRY/CLEANOUT	1
M2	-	C.S.	MANWAY COVER	W/ (4) 4" C.S. COUPLING; SEE MANWAY COVER - SEE DRAWING	COVER	1
M3	42"	FRP	COLLAR	42" SADDLE CUT COLLAR	COLLAR	1
N1	24"	FRP	MANWAY	ACCESS OPENING; W/24" STRIKER PLATE	ENTRY/CLEANOUT	1
N2	-	C.S.	MANWAY COVER	W/ (4) 4" C.S. COUPLING; SEE MANWAY COVER - SEE DRAWING	COVER	1
N3	42"	FRP	COLLAR	42" SADDLE CUT COLLAR	COLLAR	1
LL	-	GALV.	GALV. CARBON STEEL	LIFTING LUG (REFER TO DWG: NTP-10DO11)	LIFTING LUGS	4
DM	-	-	ANCHOR SYSTEM	NOT PROVIDED	DEADMAN	0
TDS	-	-	STRAP ASSEMBLY	NOT PROVIDED	TIE-DOWN STRAPS	0
TB	-	-	TURNBUCKLES	NOT PROVIDED	CLAMP	0
CHEMICAL SERVICE: FUEL STORAGE TANK					DESIGN TEMPERATURE: 140°F	

ALL INFORMATION WITHIN THIS DRAWING
 IS CONSIDERED CONFIDENTIAL, PROPRIETARY INFORMATION

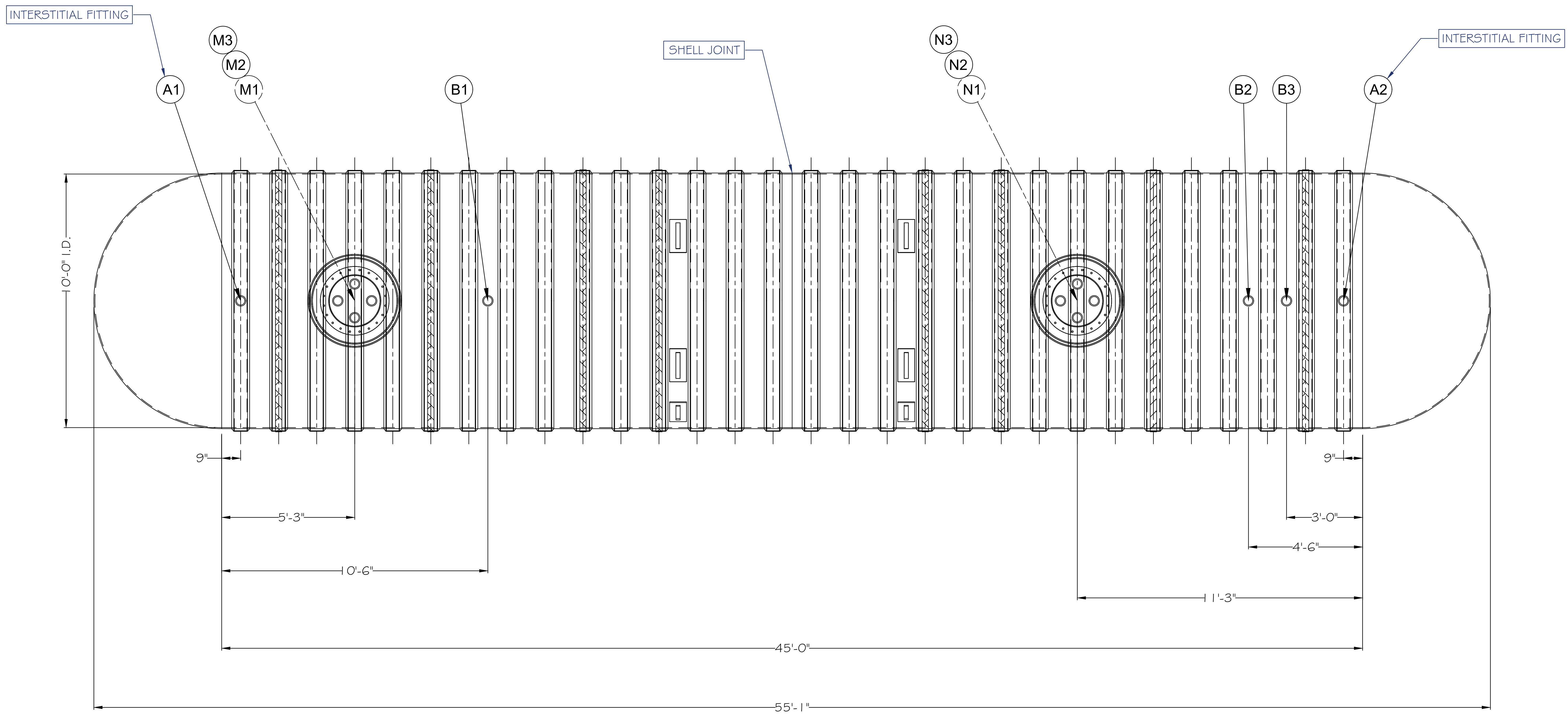
MATERIAL NOTES:			
1. USE CARDBOARD FOR 30 (EA) TANK RIBS, 6"W X 1 1/2"THK W/ 1/2"THK FRP LAY-UP. (8 1/2"W)			
2. 1'-6" ϵ - ϵ			
GENERAL NOTES:			
ALL BOLT HOLES TO STRADDLE NORMAL TANK CENTERLINES UNLESS OTHERWISE SHOWN			
NOZZLE PROJECTIONS ARE 6" FROM OUTSIDE OF TANK TO FACE OF FLANGE UNLESS OTHERWISE SHOWN			
COUPLING TO BE 2" PROJECTION ON SIDE WALL OF TANK			
CUSTOMER NOTIFICATION:			
SIGNED AND APPROVED DRAWING REQUIRED BEFORE START OF MANUFACTURING			
DATE: _____			
[]	APPROVED:	_____	
[]	APPROVED AS NOTED:	_____	
[]	REDRAW AND RESUBMIT:	_____	

FRP SPECIFICATIONS			
LINER	RESIN	F798	
	CATALYST	MEKP	
	MATRIX	C-VEIL	
FIT-OUT	THICKNESS		
	RESIN	F798	
	CATALYST	MEKP	
"B" STAGE LINER AND CORROSION BARRIER	MATRIX	C-VEIL	
	THICKNESS		
STRUCTURE	RESIN	F798	
	CATALYST	MEKP	
	MATRIX	C-VEIL	
EXTERIOR COLOR: YELLOW			
TANK ORIENTATION	HORIZONTAL	TOP TYPE	DOME
		BOTT. TYPE	DOME
MANWAY	GASKET	BUNA	
	NUTS/BOLTS	BOLTS: (40) 5/8"x3" LG NUTS: (40) 5/8" HEX	

CONTROLLED COPY

30,000 GAL. 10'-0" X 45'-0" (55'-0" OVERALL)	
NON- POTABLE WATER STORAGE TANK	
WEIGHT: 13,000 LBS ±	TELEPHONE 830.387.4027 FACSIMILE 830.387.4029 www.nationwidetankandpipe.com
PRODUCT: NON POTABLE WATER	TANK FABRICATION NOTES:
	NOTE: TANK DESIGN, FABRICATION, INSPECTED, TESTED IN ACCORDANCE WITH UL/ULC - 1316 SPEC'S CURRENT EDITION.
SHEET: 1 OF 3	

1. 12" X 12" STRIKER PLATE MUST BE INSTALLED AT BOTTOM OF TANK WALL UNDER EACH 4" COUPLING.
2. 24" X 24" STRIKER PLATE MUST BE INSTALLED AT BOTTOM OF TANK WALL UNDER ACCESS OPENING.



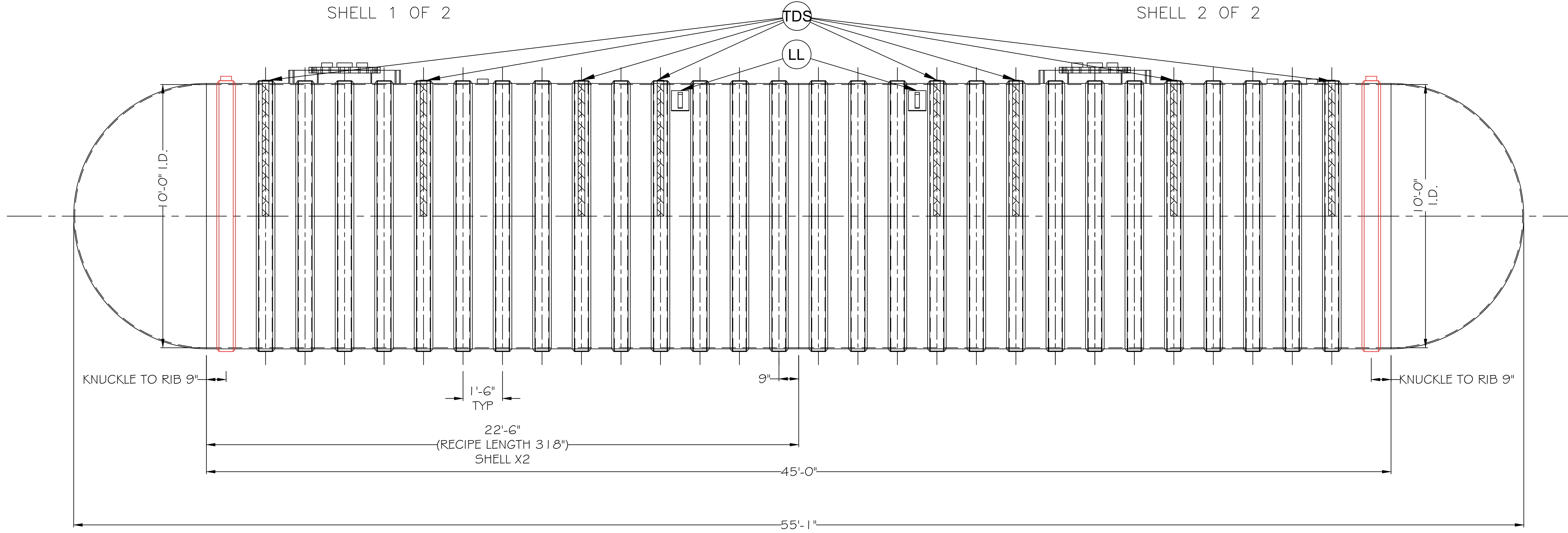
TOP VIEW

CONTROLLED COPY

-PROPRIETARY NOTICE-
THE INFORMATION CONTAINED
HEREIN IS PROPERTY
TO NATIONWIDE TANKS INC, AND
SHALL NOT BE
REPRODUCED OR DISCLOSED IN
WHOLE OR IN PART OR USED FOR
ANY DESIGN OR MANUFACTURE
EXCEPT WHEN USER POSSESSES
DIRECT WRITTEN AUTHORIZATION
FROM NATIONWIDE TANKS.



MAX. LENGTH: 55'6"
 MAX. HEIGHT: 11'-0" (W/O RISER/SUMP)
 MAX. WIDTH: 10'-8"
 DEADMAN WEIGHT: 0 LBS ±



FRONT VIEW

CONTROLLED COPY



-PROPRIETARY NOTICE-
 THE INFORMATION CONTAINED
 HEREIN IS PROPERTY
 TO NATIONWIDE TANKS INC, AND
 SHALL NOT BE
 REPRODUCED OR DISCLOSED IN
 WHOLE OR IN PART OR USED FOR
 ANY DESIGN OR MANUFACTURE
 EXCEPT WHEN USER POSSESSES
 DIRECT WRITTEN AUTHORIZATION
 FROM NATIONWIDE TANKS.