

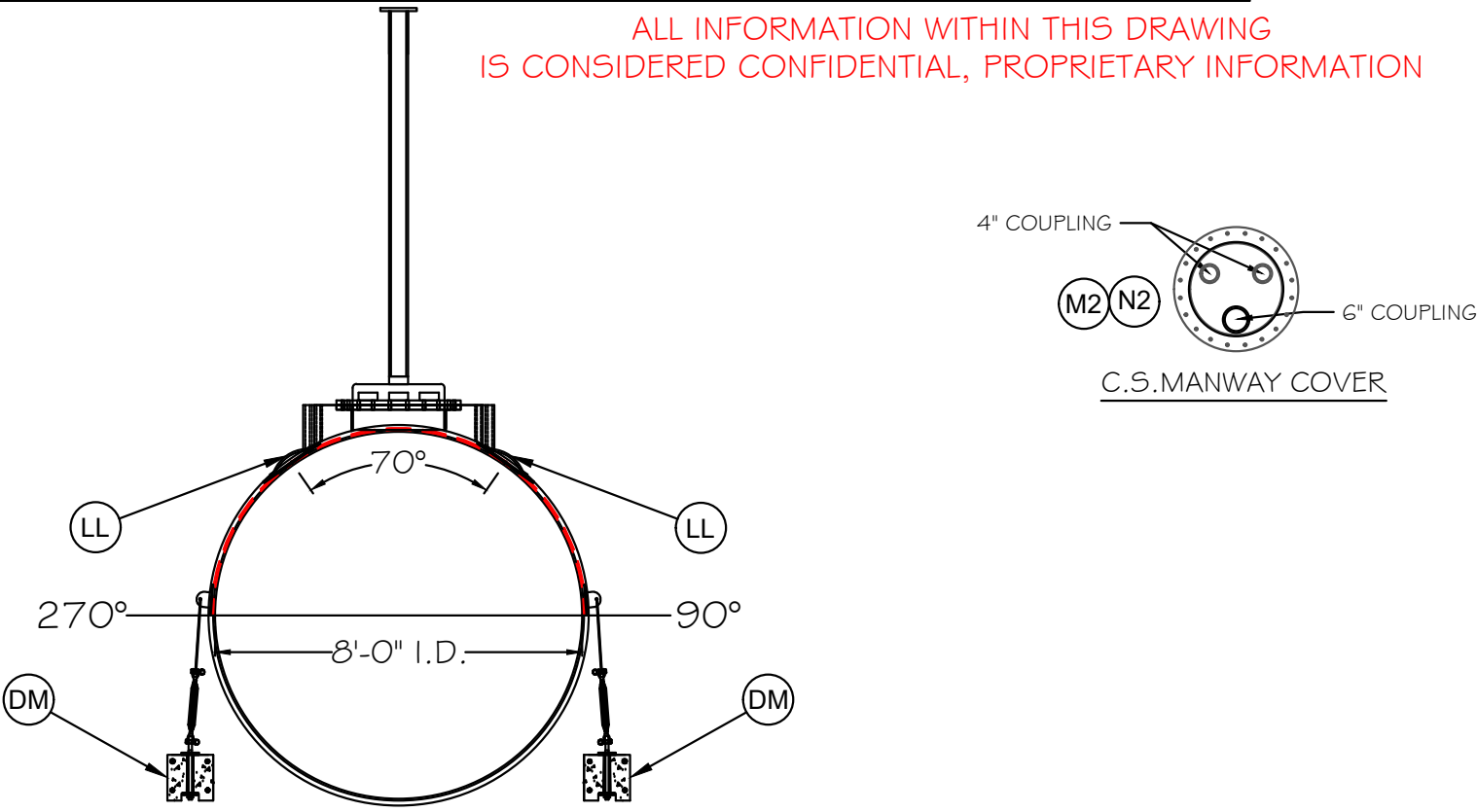
NOZZLE SCHEDULE						
LABEL	SIZE	MATL.	DESCRIPTION	ADDITIONAL ACCESSORIES - NOTES	SERVICE	QTY
A	4"	FRP	INTERSTITIAL FITTING		LEAK DETECTION	2
B1	4"	FRP	FULL COUPLING	W/ 12" X 12" STRIKER PLATE	SERVICE	1
B2	4"	FRP	FULL COUPLING	W/ 12" X 12" STRIKER PLATE	SERVICE	1
B3	4"	FRP	FULL COUPLING	W/ 12" X 12" STRIKER PLATE	SERVICE	1
B4	4"	FRP	FULL COUPLING	W/ 12" X 12" STRIKER PLATE	SERVICE	1
M1	24"	FRP	MANWAY	ACCESS OPENING; W/24" STRIKER PLATE	ENTRY/CLEANOUT	1
M2	-	C.S.	MANWAY COVER	W/ 2 - 4" # 1-6" C.S. COUPLINGS ; SEE MANWAY COVER DRAWING	COVER	1
M3	42"	FRP	COLLAR	42" SADDLE CUT COLLAR (SUMP NOT PROVIDED)	COLLAR	1
N1	24"	FRP	MANWAY	ACCESS OPENING; W/24" STRIKER PLATE	ENTRY/CLEANOUT	1
N2	-	C.S.	MANWAY COVER	W/ 2 - 4" # 1-6" C.S. COUPLINGS ; SEE MANWAY COVER DRAWING	COVER	1
N3	48"	FRP	COLLAR	48" SADDLE CUT COLLAR (SUMP NOT PROVIDED) (OFFSET)	COLLAR	1
BR	-	FRP	BRINE SYSTEM		LEAK DETECTION	1
LL	-	GALV.	GALV. CARBON STEEL	LIFTING LUG (REFER TO DWG: NTP-100011)	LIFTING LUGS	4
DM	-	-	ANCHOR SYSTEM	(2) 22' # (2) 16' LONG SLOTTED CONCRETE ANCHOR W/GALV. ANCHOR POINTS	DEADMAN	4
TDS	-	-	STRAP ASSEMBLY	D-RINGS (2EA) GLASSED TO FRP STRAP; 1/2"THK, TO BE USED IN ANCHORING TANK TO DEADMAN, USING SHACKLES, # TURN- BUCKLE (2EA), PER STRAP	TIE-DOWN STRAPS	4
TB	-	-	TURNBUCKLES		CLAMP	8
CHEMICAL SERVICE: FUEL STORAGE TANK					DESIGN TEMPERATURE: 140°F	

# SON99/100/101

**\*TRAFFIC RATED TANK\***  
**TRAFFIC RATED LID MUST BE RECESSED IN CONCRETE SLAB**

ALL INFORMATION WITHIN THIS DRAWING IS CONSIDERED CONFIDENTIAL, PROPRIETARY INFORMATION

CONTROLLED COPY



**REVISION BLOCK**

REVISION	DESCRIPTION	DATE
IR	INITIAL RELEASE	01/24/2022
1	CHANGED FROM 14K TO 13K TANK / ANCHORING KIT CHANGED	2/23/22
2	ADDED BRINE SYSTEM AND CHANGE MANWAY COVER.	3/11/22
3	CHANGED MANWAY COVERS	3/16/22
4	ADDED 4TH COUPLING (ADDED BRINE SYSTEM TO SIDE VIEW REV. 4.5)	3/16/22
5	CHANGED ONE COLLAR TO 48" (OFFSET) (ADDED COLLAR DIMENSION 8/2/2022) (REMOVED CARDBOARD RIB NOTE)	4/22/2022
6	CHANGED LAYERS AND EDITED RECIPE LENGTH	9/26/22

**GENERAL NOTES:**  
 ALL BOLT HOLES TO STRADDLE NORMAL TANK CENTERLINES UNLESS OTHERWISE SHOWN

NOZZLE PROJECTIONS ARE 6" FROM OUTSIDE OF TANK TO FACE OF FLANGE UNLESS OTHERWISE SHOWN

COUPLING TO BE 2" PROJECTION ON SIDE WALL OF TANK

**CUSTOMER NOTIFICATION:**  
 SIGNED AND APPROVED DRAWING REQUIRED BEFORE START OF MANUFACTURING

DATE: \_\_\_\_\_

[ ] APPROVED: \_\_\_\_\_

[ ] APPROVED AS NOTED: \_\_\_\_\_

[ ] REDRAW AND RESUBMIT: \_\_\_\_\_

FRP SPECIFICATIONS		
LINER	RESIN	F798
	CATALYST	MEKP
	MATRIX	C-VEIL
FIT-OUT	THICKNESS	
	RESIN	F798
	CATALYST	MEKP
"B" STAGE LINER AND CORROSION BARRIER	MATRIX	C-VEIL
	THICKNESS	
	RESIN	F798
STRUCTURE	CATALYST	MEKP
	MATRIX	C-VEIL
	THICKNESS	
EXTERIOR COLOR		YELLOW
TANK ORIENTATION	HORIZONTAL	TOP TYPE
		BOTT. TYPE
MANWAY	GASKET	BUNA
	NUTS/BOLTS	BOLTS: (40) 5/8"x3" LG NUTS: (40) 5/8" HEX

REVISION: 7  
 13,000 GAL. 8'-0" X 30'-0"  
 (38'-1" OVERALL) UNDERGROUND  
 FRP FUEL STORAGE TANK

WEIGHT: 7,500 LBS ±


CUSTOMER: KMD Distribution Inc.

PRODUCT: FUEL STORAGE

APPRD BY: SF DATE: 03/16/2022

DRAWN BY: DH DATE: 03/16/2022

SCALE: 1:1 SHEET: 1 OF 3

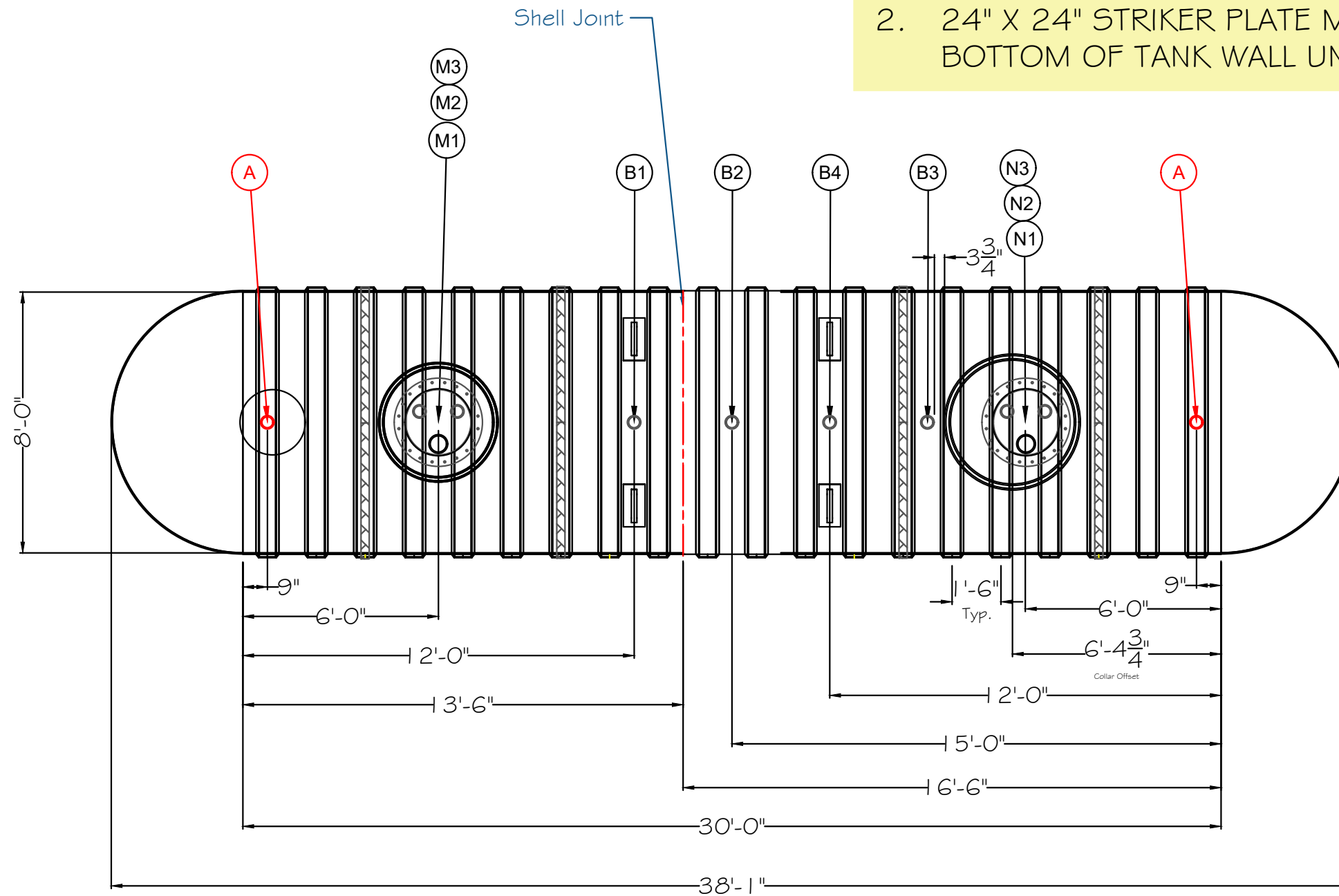


TELEPHONE 830.387.4027  
 FACSIMILE 830.387.4029  
 www.nationwidetankandpipe.com

**TANK FABRICATION NOTES:**

NOTE: TANK DESIGN, FABRICATION, INSPECTED, TESTED IN ACCORDANCE WITH UL/ULC -1316 SPECS CURRENT EDITION.

1. 12" X 12" STRIKER PLATE MUST BE INSTALLED AT BOTTOM OF TANK WALL UNDER EACH 4" COUPLING.
2. 24" X 24" STRIKER PLATE MUST BE INSTALLED AT BOTTOM OF TANK WALL UNDER ACCESS OPENING.



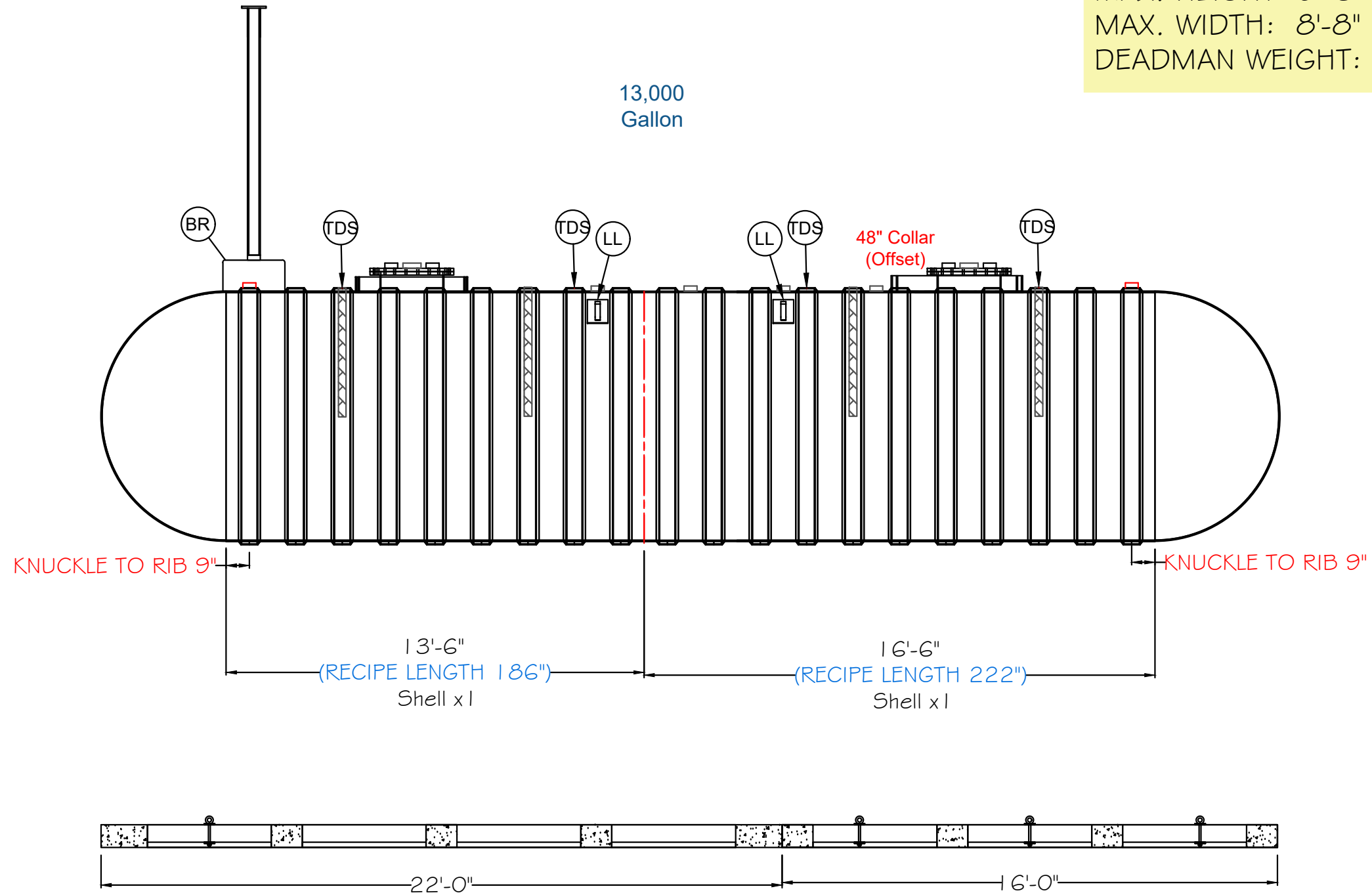
TOP VIEW

CONTROLLED COPY

<p><b>PROPRIETARY INFORMATION:</b></p> <p>THE INFORMATION CONTAINED HEREIN IS PROPERTY TO <b>NATIONWIDE TANKS INC.</b>, AND SHALL NOT BE REPRODUCED OR DISCLOSED IN WHOLE OR IN PART OR USED FOR ANY DESIGN OR MANUFACTURE EXCEPT WHEN USER POSSESSES DIRECT WRITTEN AUTHORIZATION FROM <b>NATIONWIDE TANKS.</b></p>		<p>8'-0" X 38'-1" UNDERGROUND FRP FUEL STORAGE TANK</p>	REV.
		<p>2 OF 3</p>	<p>7</p>

# SON99/100/101

MAX. LENGTH: 39'-7"  
 MAX. HEIGHT: 9'-6" (W/O RISER/SUMP)  
 MAX. WIDTH: 8'-8"  
 DEADMAN WEIGHT: 9,500 LBS ±



FRONT VIEW

CONTROLLED COPY

PROPRIETARY INFORMATION:  
 THE INFORMATION CONTAINED  
 HEREIN IS PROPERTY  
 TO NATIONWIDE TANKS INC. AND  
 SHALL NOT BE  
 REPRODUCED OR DISCLOSED IN  
 WHOLE OR IN PART OR USED FOR  
 ANY DESIGN OR MANUFACTURE  
 EXCEPT WHEN USER POSSESSES  
 DIRECT WRITTEN AUTHORIZATION  
 FROM NATIONWIDE TANKS.

