

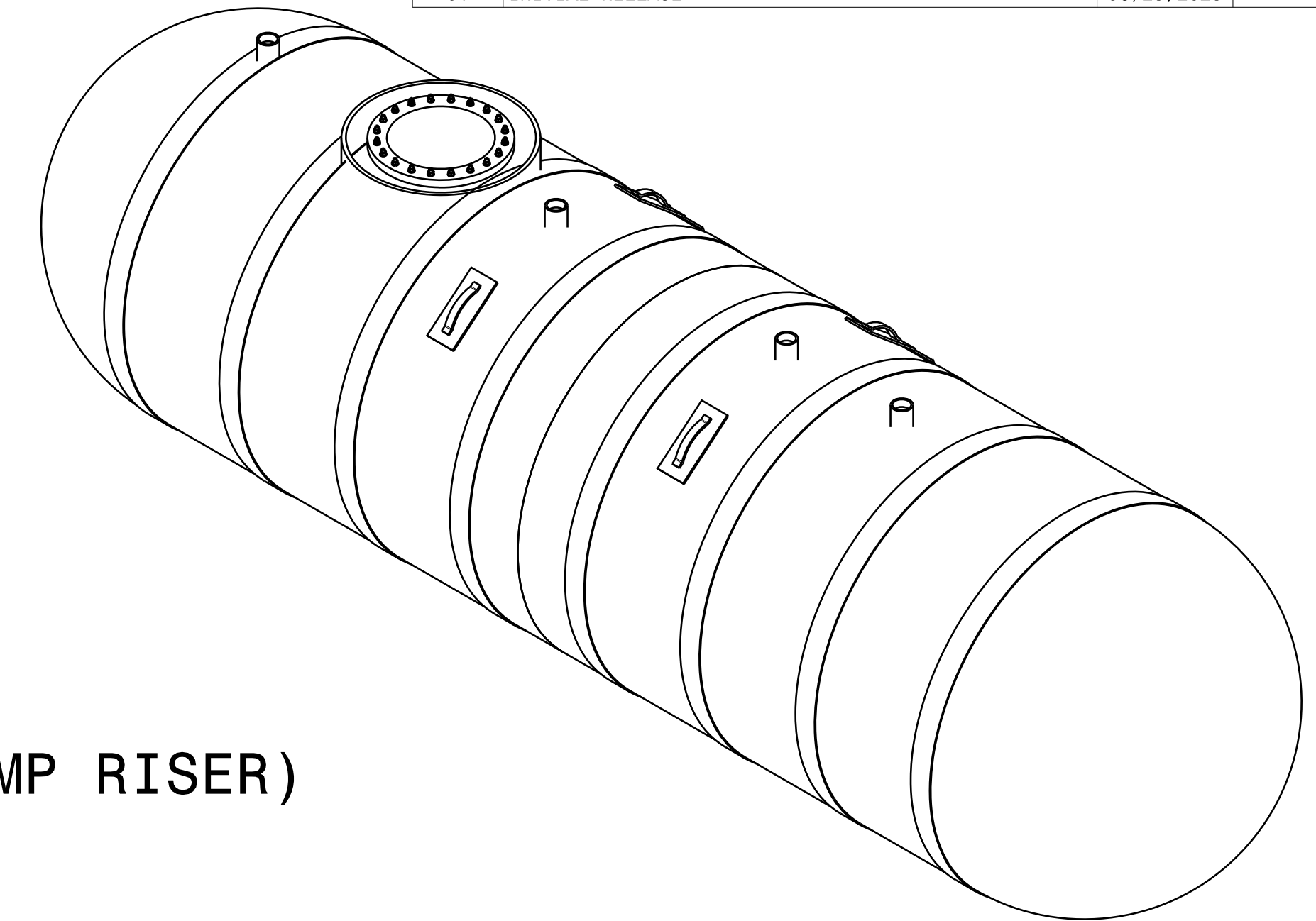
NOTES: UNLESS OTHERWISE SPECIFIED

1. ALL BOLT HOLES TO STRADDLE NORMAL TANK CENTERLINES UNLESS OTHERWISE SHOWN
2. NOZZLE PROJECTIONS ARE 6" FROM OUTSIDE OF TANK TO FACE OF FLANGE UNLESS OTHERWISE SHOWN
3. COUPLING TO BE 2" PROJECTION ON SIDE WALL OF TANK
4. STRIKER PLATE (12" X 12") MUST BE INSTALLED AT BOTTOM OF TANK WALL UNDER EACH COUPLING (WITH THE EXCEPTION OF VENT ONLY COUPLINGS).
5. STRIKER PLATE (24" X 24") MUST BE INSTALLED AT BOTTOM OF TANK WALL UNDER MANWAY ACCESS OPENING.
6. TANK DESIGNED, FABRICATED, INSPECTED/TESTED IN ACCORDANCE WITH UL/ULC -1316 SPEC'S CURRENT EDITION.
7. TRAFFIC RATE TANK - LID MUST BE RECESSED IN CONCRETE SLAB
8. DEADMEN, STRAPS, TURNBUCKLES, AND INSTALLATION SHACKLES ARE INCLUDED

SON # 232

10K CAPACITY

REVISIONS			
REV	DESCRIPTION	DATE	APPVD
01	INITIAL RELEASE	06/23/2023	

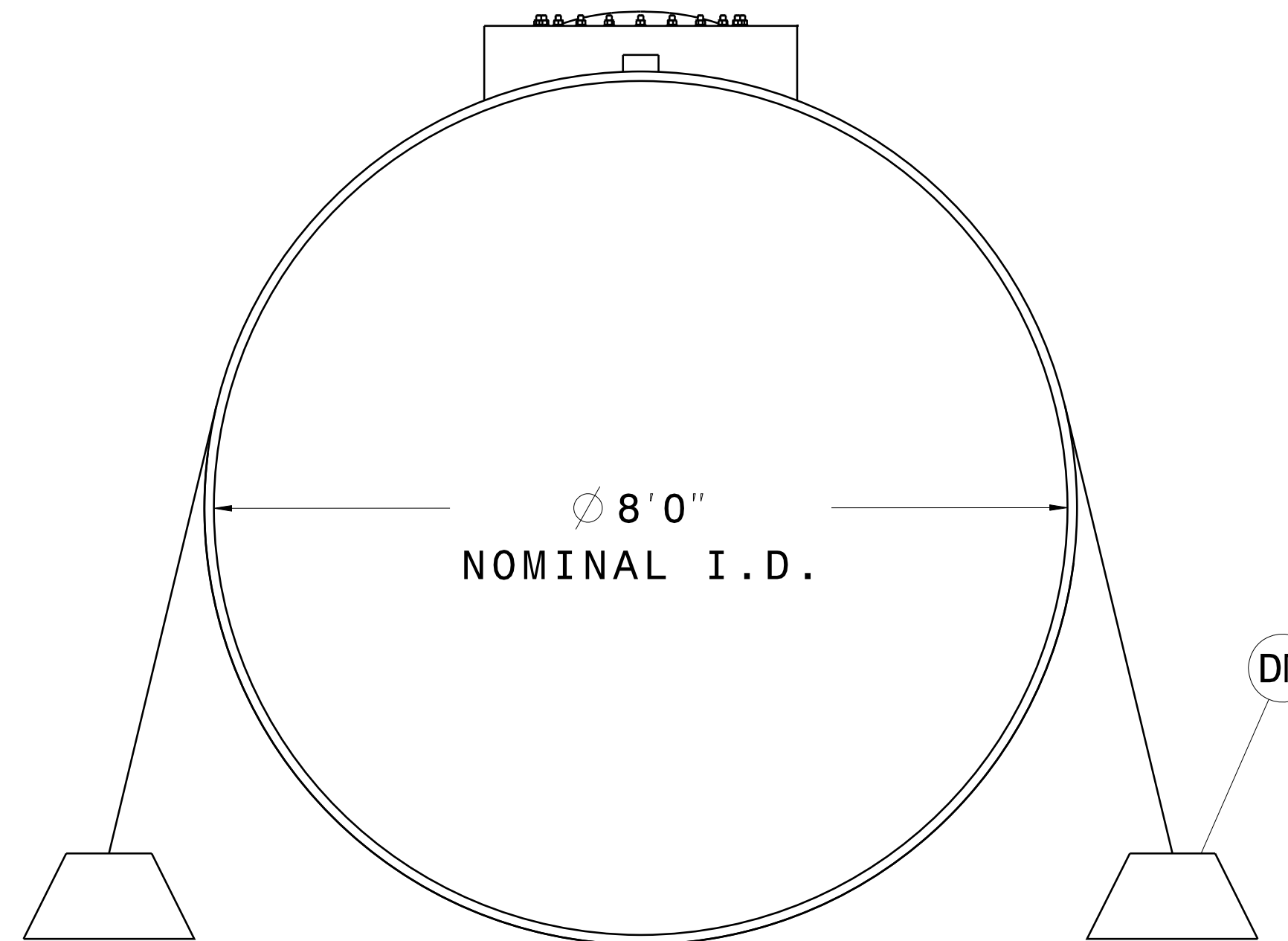


ISO VIEW

SHIPPING INFO:

MAX LENGTH = 29' -6"
 MAX HEIGHT = 9' -6" (W/O SUMP RISER)
 MAX WIDTH = 8' -8"
 TANK WEIGHT = 7,500 LBS
 DEADMEN WEIGHT = 7,800 LBS

LABEL	SIZE	MATL.	DESCRIPTION	ADDITIONAL ACCESSORIES - NOTES	QTY
A1	4"	FRP	HALF COUPLING	PROBE RIB	1
B1	4"	FRP	HALF COUPLING	W/ 12" X 12" STRIKER PLATE	3
M1	24"	FRP	MANWAY	W/ 24" X 24" STRIKER PLATE	1
M2	-	C.S.	MANWAY COVER	SEE MANWAY COVER DWG	0
M3	42"	FRP	COLLAR & SUMP	REFER TO BRAVO PRODUCTLINE	1
LL	-	GALV.	LIFTING LUGS	LIFTING LUG (REFER TO DWG: NTP-10D011)	6
DM	-	-	ANCHOR SYSTEM	2x 12' LONG SLOTTED CONCRETE ANCHOR W/GALV. ANCHOR POINTS	0
DM	-	-		2x 16' LONG SLOTTED CONCRETE ANCHOR W/GALV. ANCHOR POINTS	0
TDS	-	-	STRAP ASSEMBLY	D-RINGS GLASSED TO FRP STRAP; 1/2" THK TO BE USED IN ANCHORING TANK TO DEADMAN, USING SHACKLES, & TURN- BUCKLE PER STRAP	0
TB	-	-	TURNBUCKLES		0



END VIEW

COMPANY: _____

DATE: _____

NAME (PRINTED): _____

[] APPROVED: _____

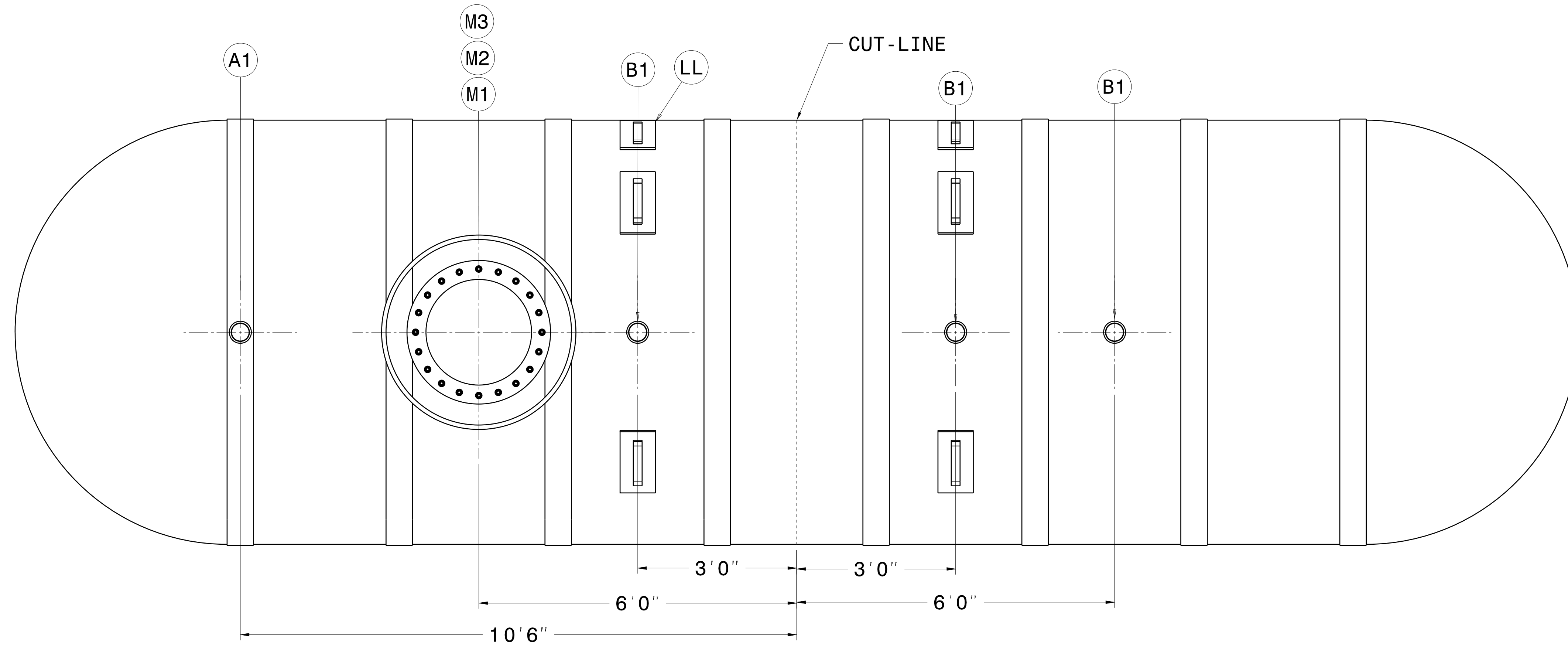
[] REDRAW AND RESUBMIT: _____

CONTROLLED COPY

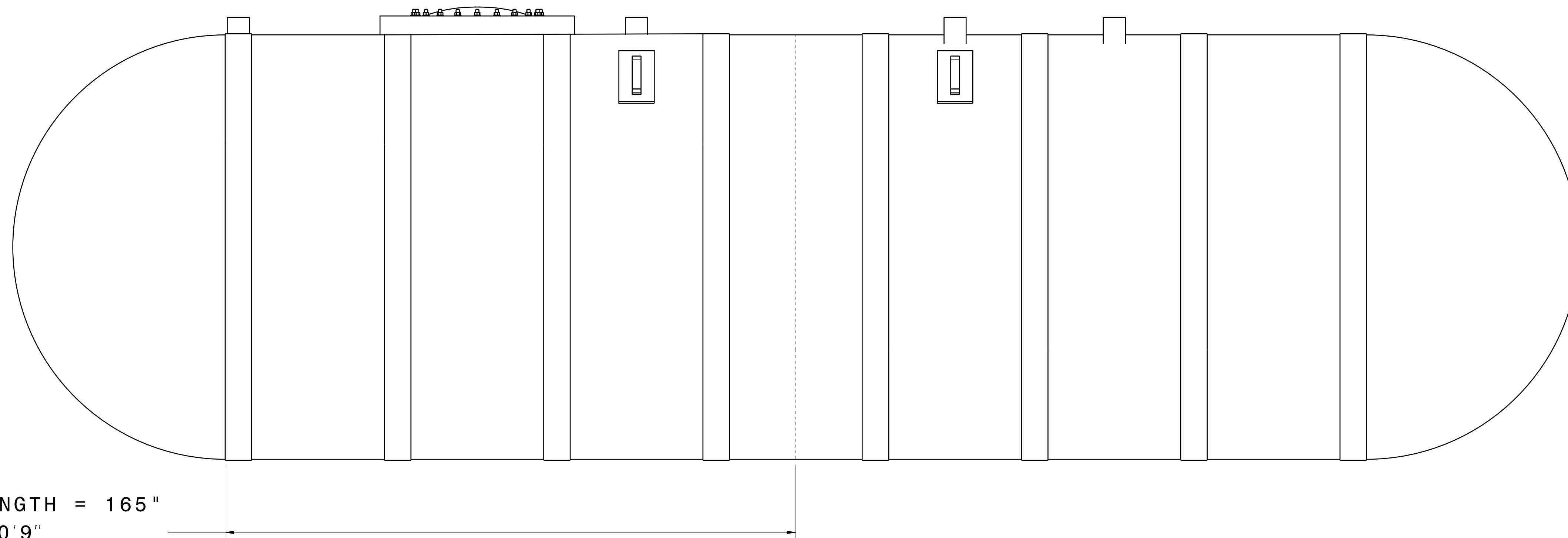
ALL INFORMATION WITHIN THIS DRAWING IS CONSIDERED
CONFIDENTIAL, PROPRIETARY INFORMATION

DIMENSIONS ARE IN INCHES UNLESS OTHERWISE SPECIFIED. BREAK EDGES/REMOVE BURRS.		MATERIAL:		DWG NAME:	
ANGLES - 1:2:0	SCALE:	8' x 10K FRP STOCK FUEL TANK		NATIONWIDE TANKS	
1:X:1 = 1:0:1"	SCALE:	D		SHEET: 1 OF 2	
1:X:1 = 1:0:01"	SCALE:	NONE		REV: 01	
1:X:1 = 1:0:001"	SCALE:	NONE		SHEET: 1 OF 2	
NEXT ASSY	USED ON	DO NOT SCALE DRAWING	CAGE CODE:	APPLICATION	

SON # 232
 CAPACITY - 10K



TOP VIEW



RECIPE LENGTH = 165"
 SHELL 1 & 2 10'9"
 CUT-LINE = 183"

SIDE VIEW