



855-895-1907

WWW.NATIONWIDETANKS.COM

CUSTOMER: SON 52  
 TANK TYPE: FTFNTD1037201 FT - FUEL 10' X 20K  
 WEIGHT: 11,000  
 LENGTH: 37'6"

BILL OF MATERIALS / SCHEDULE

- A1 4" FRP INTERSTITIAL FITTING LEAK DETECTION
- B1 4" FRP FULL COUPLING
- B2 4" FRP FULL COUPLING
- B3 4" FRP FULL COUPLING
- M1 24" FRP MANWAY ACCESS OPENING

TANK FABRICATION NOTES:

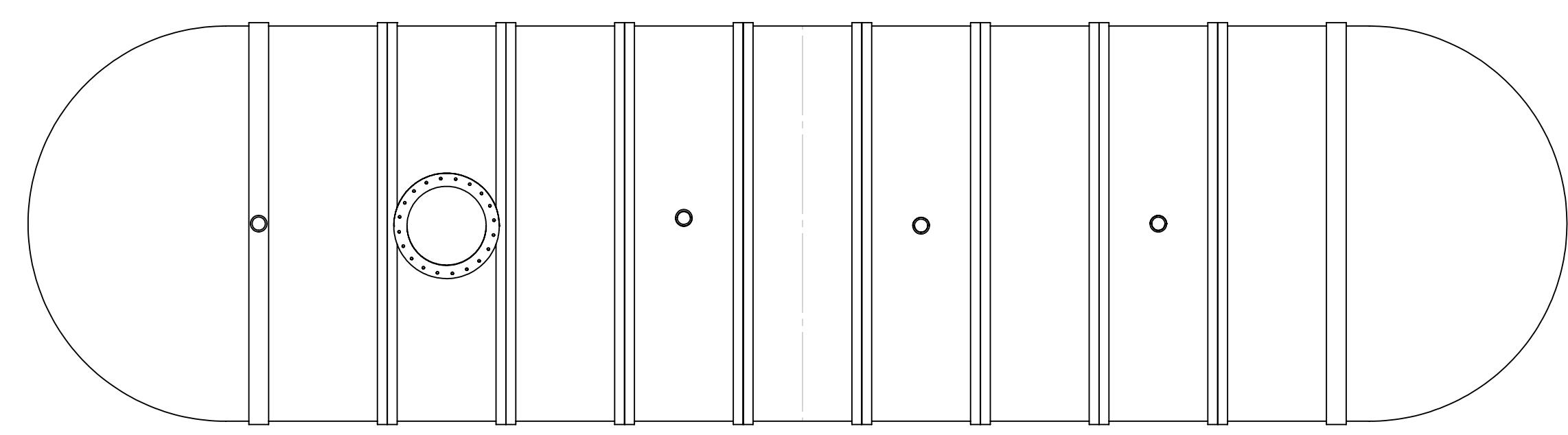
ALL COUPLINGS AND MANWAYS  
 MUST HAVE STRIKER PLATES INSTALLED

DRAWN BY: JR      DATE: 11/14/2023

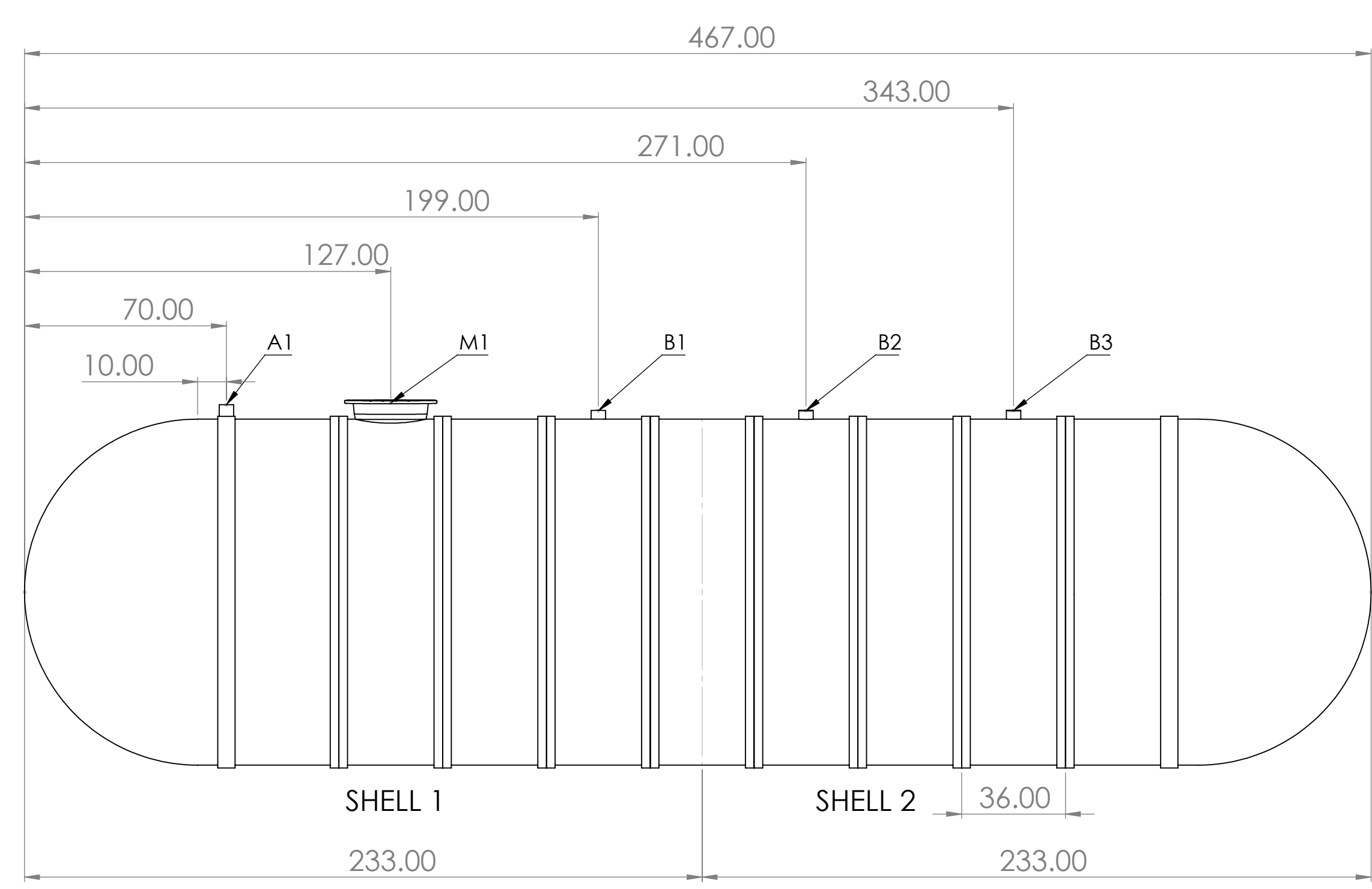
CHECKED BY:      DATE:

APPRD BY:      DATE:

RESIN	CATALYST	MATRIX
F798	MEKP	C-VEIL



FTFNTD1037201 FT - FUEL 10' X 20K  
 (2) 5 RIB SHELLS



CUTOFF LINES FROM OPEN END OF WINDER

SHELL 1 CUTOFF = 140

SHELL 2 CUTOFF = 140

PROPRIETARY INFORMATION : The information contained herein is property to NATIONWIDE TANKS INC, and shall not be reproduced or disclosed in whole or in part or used for any design or manufacture except when user possesses direct written authorization from NATIONWIDE TANKS INC. NOTE : Fuel Tanks are designed, manufactured, inspected, and tested in accordance with UL/ULC 1316 Third Edition under project # 4790834407. Helical Armor Tank®, Dynamic Band Technology®, and OxyShield Resin System® are registered trademarks of NATIONWIDE TANK INC - Patent pending. GENERAL NOTES: ALL BOLT HOLES TO STRADDLE NORMAL TANK CENTERLINES UNLESS OTHERWISE SHOWN \*NOZZLE PROJECTIONS ARE 6" FROM OUTSIDE OF THE TANK TO FACE OF FLANGE UNLESS OTHERWISE SHOWN \*COUPLING TO BE 2" PROJECTION ON SIDE WALL OF TANK \*12" X 12" STRIKER PLATE MUST BE INSTALLED AT BOTTOM OF TANK WALL UNDER EACH COUPLING (WITH THE EXCEPTION OF VENT ONLY COUPLINGS) \*24" X 24" STRIKER PLATE INSTALLED AT BOTTOM OF TANK WALL UNDER ACCESS OPENING.